



Wizcon Supervisor™

The complete Internet-based solution for control and information

Installing a Database for Centralized User Management



ELUTIONS Inc.
1300 East 8th Avenue
Suite 200
Tampa, FL 33605
USA
tel +1 (813) 371-5500
fax +1 (813) 371-5501

Wizcon Systems SAS
Parc Technologique de Lyon
12 allée Irène Joliot-Curie
F-69791 Saint-Priest Cedex
France
tel +33 (0)4 72 47 98 98
fax +33 (0)4 72 47 98 99

Wizcon Systems BV
Concordiaweg 149-151
Postbus 351
NL-4200 AJ Gorinchem
Nederland
tel +31 (0)183 646 303
fax +31 (0)183 621 601

Wizcon Systems Ltd
The Gate Hotel, Scotland Gate
Northumberland
NE62 5SS
UK
tel +44 (0)845 606-6120
fax +44 (0)845 606-6121

www.wizcon.com
<http://support.wizcon.com>

Table of Contents

Table of Contents.....	2
Introduction.....	3
Installation	4
Installing the database using Microsoft SQL Server	4
Installing the database using MSDE.....	5
External Tools and utilities	7

Introduction

For large sites with many Wizcon stations, there is often a common pool of users of each station. In earlier versions of Wizcon, the only possibility to manage this was to use the default Microsoft Access database, WizUM.mdb, on a mapped drive, accessible to all stations or to make a copy of the database on each station. However, there are three clear disadvantages of this approach:

1. **Scalability:** The Access database has performance issues when many stations are trying to change or read data from the database.
2. **Centralization:** If a change is made to the database from one station, all other stations must be restarted before they can benefit from these changes.
3. **Robustness.** If there is a problem accessing the central Access database (e.g. network communication problem), you will no longer be able to manage users.

To address these problems, the Wizcon system administrator now has a second choice: to use an SQL Server database placed on a central server to manage users. This approach is highly scaleable and completely centralized: a change made on any station is immediately apparent on other stations. You will also see that there is a built-in backup mechanism so that a station can always continue to work if it can no longer connect to the central server. If you already have Microsoft SQL Server installed, the installation is straightforward. However, you can also use MSDE, a free version of SQL Server, with fewer options. This document describes how to install your databases so that you are ready to use centralised user management.

Of course, use of SQL Server is not limited to user management; you can store audit trail information and external history files if you so wish.

Please remember that you are not obliged to use this approach; it is provided *in addition to* the existing Access database approach rather than replacing it.

Once your database is installed, you should refer to the appropriate chapter in the User Guide to see how to use the database in your routine application development.

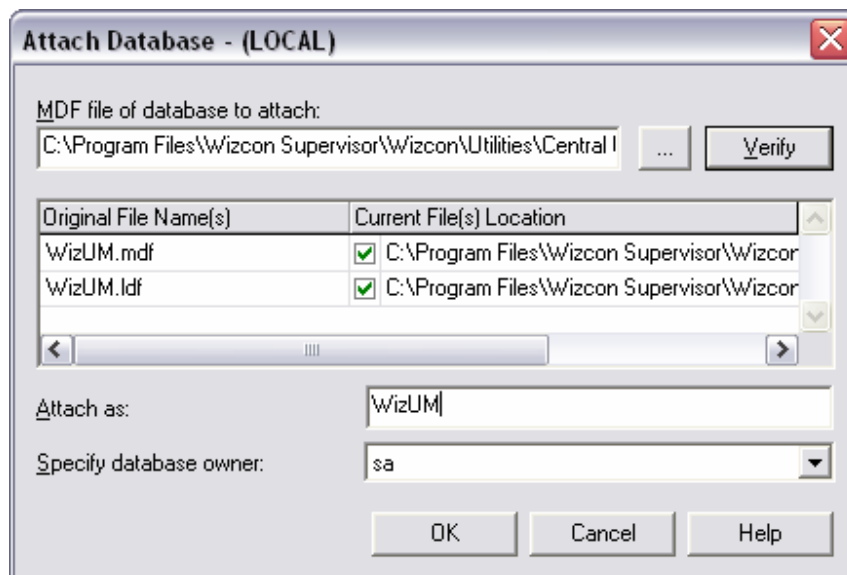
Installation

This section will show you how to use both Microsoft SQL Server and MSDE to install the centralised user management database.

The files needed to create the SQL Server database are included as part of the standard installation of Wizcon Supervisor. However, you must first copy the files, WizUM.mdf and WizUM.ldf from ".\Wizcon\Utilities\Central UM DB" folder into a folder of your choice on the computer that is to host the database.

Installing the database using Microsoft SQL Server

1. Start SQL Server Enterprise Manager.
2. For the server upon which you want to install the database, right-click on the "Databases" node, and choose the option "Attach to Database". From the resulting dialog box, select the WizUM.mdf file that you have just copied.
3. Specify the database owner. The name of the database owner will later be registered in the WizTune.dat file on each Wizcon station.
4. Hit OK.



This will install the database, WizUM, on the selected server. This database contains all the information you need to start a new application (with a single user and group as in the standard WizUM.mdb).

Installing the database using MSDE

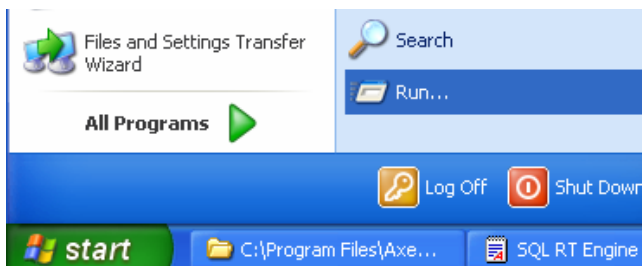
All the required components for MSDE can be found on the installation CD

In order to install MSDE with the correct settings in term of Security and Networking, it is strongly recommended to execute the setup.exe adding the relevant parameters:

Parameter	Meaning
DISABLENETWORKPROTOCOLS=0	The network is supported
SECURITYMODE=SQL	Mix mode of security level Windows/SQL. This means that both Windows logins and logins from users defined inside MSSQL can be used to access the Database Server
SAPWD="sa"	Upon install, all MSSQL have per default, a user "sa" (S ystem A dministrato r). The password for this account defined in MSSQL has to be provided during the installation. For simplification purpose in the example bellow, the pawwsord and the login are identical. It it HIGHLY recommended to change this password and to apply a relevant user strategy to the database server.

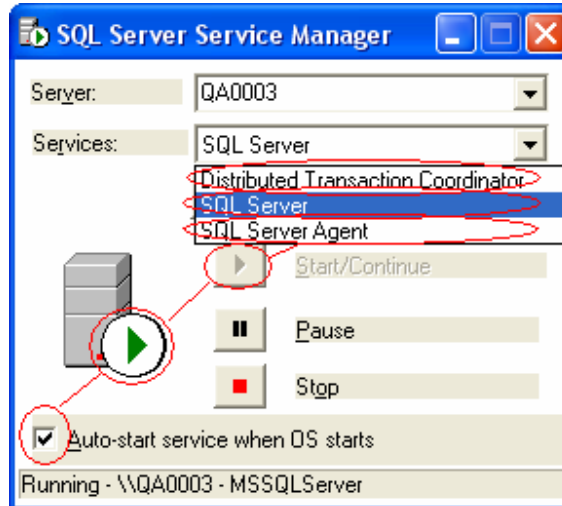
To execute the setup with the relevant parameters you can follow the exemple below where the following line is executed:

```
<<MyPath>>\setup.exe" DISABLENETWORKPROTOCOLS=0 SECURITYMODE=SQL SAPWD="sa"
```



First make sure the SQL DB Server (MSDE or MSSQL) is started.

Start `C:\Program Files\Microsoft SQL Server\80\Tools\Binn\sqlmangr.exe`



Make sure DTS, SQLServer and SQLServerAgent are started and set to AutoStart when the Operating System starts up.

The necessary files for the Centralized User Management (the empty data bases) are located in your installation path, for example under

`C:\Program Files\Wizcon Supervisor\Wizcon\Utilities\Central UM DB.`

The two files provided (WizUM.mdf, WizUM.ldf) represent the User Management Database that will be attached to the SQL Server. These two files have to be copied on the PC where the SQL Server is installed. It is highly recommended to use a "secured" PC to hold this centralized database.

To activate these two files in the SQL Server you have to "attach" them. Provided that you don't have any UserInterface in MSDE that would simplify this procedure you have to execute this operation using a SQL script:

Open a text editor (e.g. Notepad) and type the script below, specifying the path where you copied the two files:

```
EXEC sp_attach_db @dbname = 'WizUM',  
    @filename1 = 'Specify your DB path\WizUM.mdf',  
    @filename2 = 'Specify your DB path\WizUM.ldf'
```

Save this file as Attach.sql and copy it to C:/

MSDE ships with a utility OSQL.exe that allows you to execute .sql files.

You can find more details about this utility at:

<http://support.microsoft.com/default.aspx?scid=kb;EN-US;q325003>

Run the command

osql -E -i C:\AttachDB.sql -o C:\SQLResult.txt

Under `C:\SQLResult.txt` you will see the result of this transaction. When editing this file you should see something like "1> 2> 3>" meaning that the 3 above command lines in your script have been executed.

External Tools and utilities

As mentioned above, MSDE is a freeware that ships with minimal Administration and Management Tools.

In the MSDE folder in your installation, you will find an example of such a tool, "SQL Server Web Data Administrator". However, if this doesn't meet your needs, you will find different Freeware Tools on the Internet that will allow you to efficiently administrate and manage your SQL Database Server.

Examples of tools can be found at:

<http://www.microsoft.com/downloads/details.aspx?FamilyID=C039A798-C57A-419E-ACBC-2A332CB7F959&displaylang=en>

or

<http://www.ms-inc.net/database.aspx?ProductID=dbManager>